

Student's Name \_\_\_\_\_

Teacher # \_\_\_\_\_ Branch \_\_\_\_\_

PIANO

LEVEL 3

Perfect Score: 90  
Number Incorrect: \_\_\_\_\_  
Final Score: \_\_\_\_\_  
Grader's Initials: \_\_\_\_\_

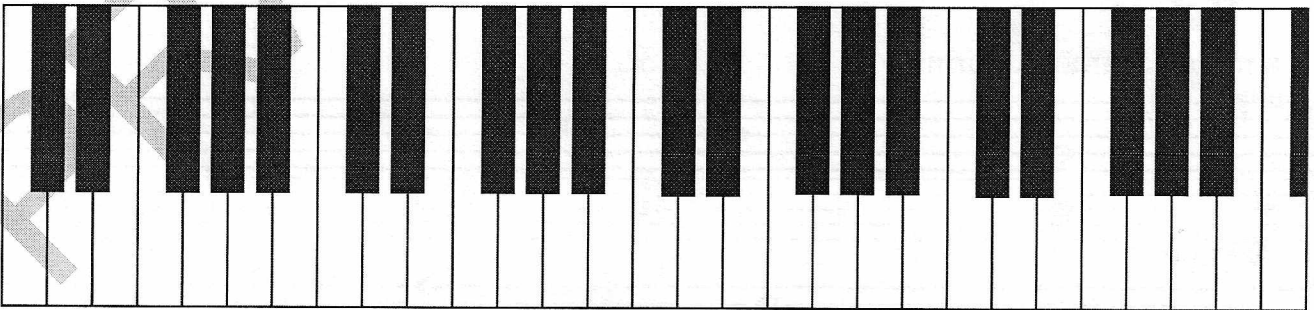
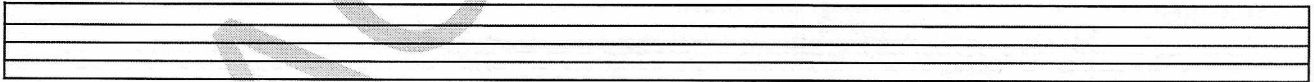
Circle  
Passing: 63 Pass / RAL  
Convention Eligibility: 72 Yes / No

# CERTIFICATE OF MERIT™

## MUSICAL KNOWLEDGE EXAM



# 2012



### EAR TRAINING - SET A

Copyright © 2012 Music Teachers' Association of California

This material is intended for student practice only. This does not provide credit for the Certificate of Merit Evaluations.

1. Name the Major key for each key signature. (6 points)

A grand staff with two staves (treble and bass clefs) showing six measures of key signatures. Each measure contains a single chord with its constituent notes. The key signatures are: 1. B-flat major (two flats), 2. D major (two sharps), 3. E-flat major (three flats), 4. G major (one sharp), 5. A major (no sharps or flats), and 6. C major (no sharps or flats).

\_\_\_\_\_ Major    \_\_\_\_\_ Major    \_\_\_\_\_ Major    \_\_\_\_\_ Major    \_\_\_\_\_ Major    \_\_\_\_\_ Major

2. Name the minor key for each key signature. (3 points)

A grand staff with two staves (treble and bass clefs) showing three measures of key signatures. Each measure contains a single chord with its constituent notes. The key signatures are: 1. F major (one flat), 2. D major (two sharps), and 3. B-flat major (two flats).

\_\_\_\_\_ minor    \_\_\_\_\_ minor    \_\_\_\_\_ minor

3. Add sharps or flats (accidentals) to complete each scale. (5 points)

G Major

A single treble clef staff with a G-clef. It contains a scale starting on G4 with six whole notes: G, A, B, C, D, E.

d minor, natural form

A single treble clef staff with a d-clef. It contains a scale starting on D4 with six whole notes: D, E, F, G, A, B.

E<sup>b</sup> Major

A single bass clef staff with an E-clef. It contains a scale starting on E3 with six whole notes: E, F, G, A, B, C.

a minor, harmonic form

A single bass clef staff with an a-clef. It contains a scale starting on A2 with six whole notes: A, B, C, D, E, F.

A Major

A single treble clef staff with an A-clef. It contains a scale starting on A4 with six whole notes: A, B, C, D, E, F.

4. Name each interval. Tell whether each interval is Major or Perfect. The first one is given. (7 points)

P4  
(Example) \_\_\_\_\_

5. Name each triad with its root (letter name). Circle Major or minor for each one. The first one is given. (5 points)

C Major minor      F Major minor      G Major minor

Major minor      Major minor      Major minor

6. Name the position (inversion) for each triad (R, 1st, or 2nd). The first one is given. (5 points)

1st \_\_\_\_\_

7. Check the Roman numeral for each triad. Use the Major key for each example. The first one is given. (5 points)

I  
✓ IV  
V

I  
IV  
V

I  
IV  
V

I  
IV  
V

I  
IV  
V

I  
IV  
V



13. Check the term for each definition. (10 points)

a. walking tempo

\_\_\_\_\_ *adagio*  
\_\_\_\_\_ *andante*  
\_\_\_\_\_ *allegro*

b. spirited

\_\_\_\_\_ *spiritoso*  
\_\_\_\_\_ *moderato*  
\_\_\_\_\_ *dolce*

c. gradually softer

\_\_\_\_\_ *tenuto*  
\_\_\_\_\_ *decrescendo*  
\_\_\_\_\_ *ritardando*

d. go back to the beginning and play until *fine*

\_\_\_\_\_ *a tempo*  
\_\_\_\_\_ *fermata*  
\_\_\_\_\_ *D.C. al fine*

e. # b ♯

\_\_\_\_\_ accidentals  
\_\_\_\_\_ tie  
\_\_\_\_\_ accent

f. Major and minor keys with the same key signature

\_\_\_\_\_ harmonic minor  
\_\_\_\_\_ natural minor  
\_\_\_\_\_ relative Major and minor

g. use the soft pedal (pedal on the left)

\_\_\_\_\_ *8<sup>va</sup>*  
\_\_\_\_\_ legato pedal  
\_\_\_\_\_ *una corda*

h. slow tempo

\_\_\_\_\_ *vivace*  
\_\_\_\_\_ *adagio*  
\_\_\_\_\_ *moderato*

i. a short musical idea

\_\_\_\_\_ motive  
\_\_\_\_\_ *molto*  
\_\_\_\_\_ damper pedal

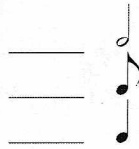
j. sweetly

\_\_\_\_\_ *poco*  
\_\_\_\_\_ *dolce*  
\_\_\_\_\_ *piano*

Allegro

Mozart: *Country Dance*

Answer questions 14-20 about the music above. (11 points)

14. Write the letter name of the key and circle Major or minor. \_\_\_\_\_ Major minor
15. What type of note receives one beat? \_\_\_\_\_ 
16. What is meaning of the tempo? \_\_\_\_\_ slowly  
 \_\_\_\_\_ walking tempo  
 \_\_\_\_\_ fast, cheerfully
17. What type of notes are used in measure 3? \_\_\_\_\_ quarter and half  
 \_\_\_\_\_ quarter and sixteenth  
 \_\_\_\_\_ quarter and eighth
18. What is the meaning of the word *Fine* in measure 8? \_\_\_\_\_ return to the beginning  
 \_\_\_\_\_ the end  
 \_\_\_\_\_ repeat the music
19. Name triads **a** and **b** with their roots (letter name). Circle Major or minor for each one.  
 a. \_\_\_\_\_ Major minor  
 b. \_\_\_\_\_ Major minor
20. Name each boxed interval (for example, M6, P5).  
 1. \_\_\_\_\_  
 2. \_\_\_\_\_  
 3. \_\_\_\_\_  
 4. \_\_\_\_\_

Burgmüller: *The Young Shepherdess*

Answer questions 21-24 about the music above. (7 points)

21. This music is in the key of C Major. Check the Roman numeral for each circled chord.

a.  I  IV  V

b.  I  IV  V

22. Check the definition for each of the following terms or symbols used in the music.

a.  $8va$   hold the note longer  
 play one octave higher  
 tenuto

b.  $f$   loud  
 medium loud  
 a sudden, sharp accent

c.  $>$   gradually louder  
 gradually slower  
 gradually softer

23. What term best describes the following rhythmic pattern used throughout the music?



triplet  
 legato  
 motive

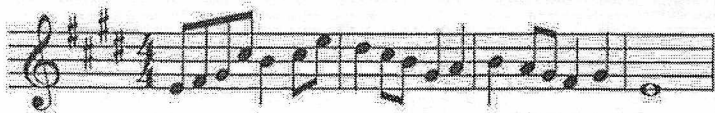
24. What term describes the melody in measures 6-7 (the bracketed notes)?

sequence  
 brace  
 repetition

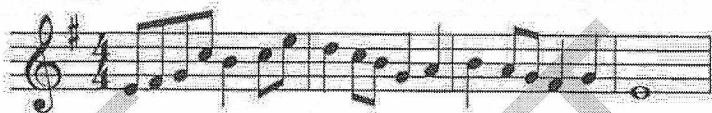
# EAR TRAINING EVALUATION

This is your Level 3 ear training evaluation. Listen to each question and its musical example. Mark (or circle) your answer. Each example will be played two times. (10 points)

1. Recognition of Major or minor in a four-measure phrase.



\_\_\_ Major



\_\_\_ minor

2. Recognition of Major or minor in a four-measure phrase.



\_\_\_ Major



\_\_\_ minor

3. \_\_\_ Legato touch                      \_\_\_ Staccato touch

4. Recognition of Major or minor triads.

Ex. 1 Major \_\_\_                      minor \_\_\_

Ex. 2 Major \_\_\_                      minor \_\_\_

5. Recognition of Major and Perfect intervals.

Ex. 1 Major 2nd \_\_\_                      Major 3rd \_\_\_

Ex. 2 Perfect 4th \_\_\_                      Major 7th \_\_\_

Ex. 3 Perfect 5th \_\_\_                      Major 6th \_\_\_

6. Recognition of meter in a four-measure phrase.

$\frac{2}{4}$  time \_\_\_

$\frac{3}{4}$  time \_\_\_

7. Recognition of tempo.

Adagio \_\_\_

Spiritoso \_\_\_